

# Products at a Glance



**High-Performance  
Products from Extreme Networks**



# Choose Extreme Networks

More applications, more complexity—telephony, storage, mobility and applications—all demanded right away. Higher stakes—downtime and security incidents that can cripple operations and raise costs. Fewer resources—constrained electrical power and fewer people to manage an increased workload. More devices—an end-user community that is highly mobile and with high expectations. All of this with less budget to get it done. How do you solve these issues and still be ready for more? Extreme Networks® solutions deliver the scalability, agility, and simplicity you need to address your exciting and yet demanding challenges:

- **Scalability** to enter new markets, meet the demands of the ‘peaks’ of the business world, and scale with your organization as it grows and evolves.
- **Agility** to implement new applications quickly and respond to your business and user community, without making major investment and change.
- **Simplicity** that delivers on the vision of an environment that is simpler to install, operate and maintain.

# Prepare for the future. Be Extreme.

Our future-proof designs allow you to avoid forklift upgrades ultimately protecting your past and future network investments.

# BlackDiamond Family



## BlackDiamond 20K

For Carrier Ethernet Transport networks that demand our highest performance solutions.

- High-density line-rate 10GbE today
- Line-rate 100GbE ready without switch fabric upgrades
- Hardware support for multicast QoS for video applications
- IEE 802.1ag and ITU Y.1731 support for proactive service management



## BlackDiamond 8K

For small to large enterprise network edge, aggregation/core and data centers.

- High-density gigabit or 10 Gigabit Ethernet switch for aggregation/core, high-performance cluster computing (HPCC) and data center deployments
- Scales from 24G per slot to 128G per slot switching bandwidth. Architecturally ready for 40G/100G interfaces
- Cost-effective edge switch for the wiring closet with high-density PoE support for campus enterprises



## BlackDiamond 10K

For Carrier Ethernet networks where high Gigabit Ethernet density, availability and security are crucial.

- Hardware support for IPv6, MPLS, MAC-in-MAC and NAT
- CLEAR-Flow Security Rules Engine
- Redundant, hot-swappable management and switching modules, power supplies and I/O modules



## BlackDiamond 12K

For Carrier Ethernet aggregation where high service density with carrier-class scalability and availability are required.

- Ingress and egress hierarchical QoS to handle thousands of subscribers
- High-performance multicast, MAC-in-MAC and MPLS for network scaling
- Advanced vMAN service multiplexing, cross-connect and network-peering features for Carrier Ethernet deployments

# Summit Family

## Summit Advanced Series

### Summit Advanced Switch Common Features

- Universal Port dynamic port configuration for IP Telephony and security
- 40 gigabit full-duplex SummitStack™ stacking for mix-and-match stacking
- IPv4/IPv6 unicast and multicast routing and intelligent Layer 2 switching
- ExtremeXOS® operating system
- ExtremeXOS scripting capability to automate switch configuration



### Summit X650

Ten gigabit Top-of-Rack switch for service virtualization and aggregation.

- 24-port 10 Gigabit Ethernet with 10GBASE-T or SFP+ support in 1 rack unit with additional 8-port 10 Gigabit Ethernet option module
- Optional 256 Gbps stacking for up to eight units in a stack to provide up to 10 Gigabit Ethernet ports in one logically integrated unit
- Optional 512 Gbps stacking for connecting two Summit® X650 switches to provide 48 non-blocking 10 Gigabit Ethernet ports
- AC or DC dual and hot-swappable power supply



### Summit X480 Series

High-performance gigabit switch for Data Center virtualization, Enterprise aggregation, and Carrier Ethernet Transport.

- High-performance switching and routing with 48-port Gigabit Ethernet or 24-port gigabit and 2-port 10 Gigabit Ethernet
- Optional 4-port 10 Gigabit Ethernet for 40 Gbps uplinks and 128 Gbps high-speed stacking
- Supports MPLS/H-VPLS and highly scalable Layer 2 and Layer 3 switching with up to 512k MAC addresses or up to 512k IPv4 routes



### Summit X450a/X450e Series

Gigabit fiber, copper, or PoE Layer 2/Layer 3 intelligent switching for advanced IP services at aggregation and the edge.

- Flexible fiber and copper Gigabit Ethernet with optional 10 Gigabit Ethernet
- Flexible 10/100/1000 PoE with optional 10 Gigabit Ethernet
- AC power supply with external redundancy options



### Summit X250e Series

For 10/100 Layer 2/Layer 3 intelligent switching for advanced IP services at the edge.

- Flexible fiber and copper Fast Ethernet connectivity with PoE and gigabit uplinks
- AC or DC power supply with external redundancy options

---

## Summit Value Series

### Summit Value Switch Common Features

- ExtremeXOS operating system
- ExtremeXOS scripting capability to automate switch configuration



### Summit X350/X150 Series

Intelligent Layer 2 switching for simple enterprise edge solutions.

- External redundant AC power supply options
- Flexible 10/100/1000BASE-T standalone switches
- 10/100BASE-TX with and without PoE standalone switches

# Wireless Products



## Summit WM3000 Series WLAN Controllers

Highly scalable, secure, and feature-rich wireless LAN controller for multimedia enterprise wireless networks.

- Small site to large multi-site deployment
- Comprehensive wired/wireless security features
- Scalability and high availability with clustering
- Seamless mobility



## Altitude 3500/4600 Series Access Points

Full portfolio of access points for campus-wide deployments and for branch office applications.

- Dual radio/dual band indoor/outdoor access points
- Plug and play deployment
- 802.11n performance for high-speed wireless access
- Mesh networking and bridging for extending wireless service



## Wireless Management Suite

Extreme Networks Wireless Management Suite offers life cycle management of wireless networks based on the Summit WM3000 WLAN solution.

- Multi-site dashboard view
- RF Visualization with heat maps
- Wizard-based diagnostic tools

# Security Products



## Embedded ExtremeXOS

The ExtremeXOS operating system's built-in security capabilities provide network access control integrated with endpoint integrity checking, and protection for the network control and management planes.

- Network login authentication, and supports multiple supplicants even in separate VLANs
- MAC Security allows the lockdown and limiting of the number of MAC addresses on a port
- Protects network infrastructure, network services and host computers from spoofing and man-in-the-middle attacks



## Sentriant NG300

For detecting and mitigating rapidly propagating security threats from inside the network.

- Defends against security threats without interfering with network traffic
- Unique behavioral defense mechanism complements traditional signature-based IPS systems



## Sentriant AG200

For endpoint compliance testing and Network Access Control.

- Flexible deployment options (802.1X, DHCP, in-line) for broad infrastructure compatibility
- Quarantines and facilitates remediation of non-compliant endpoints



# Extreme Innovation



## ExtremeXOS

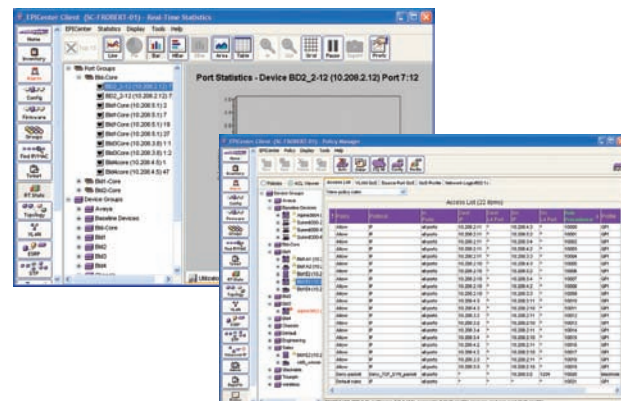
The ExtremeXOS network operating system provides visibility, insight and control for mission-critical applications and offers access to new types of configuration and management technologies that enable more innovative, creative, and extensible solutions. The modular ExtremeXOS operating system stands out as a real alternative to closed, proprietary products that limit choice and compromise performance.

The ExtremeXOS operating system from edge to core simplifies the administration of your network, which can result in lower costs and streamlined resource management, saving your team time and hassle during routine maintenance and upgrades.

Extreme Networks has changed the industry by creating ExtremeXOS—a highly available and extensible software foundation for converged networks. ExtremeXOS raises the bar for availability, which is critical when offering carrier-grade voice and video services over IP and for supporting mission-critical business applications such as CRM. A more available network can also lower operational costs by drastically reducing emergency maintenance. ExtremeXOS allows you to extend the capabilities of your network via dynamic loading of applications, XML APIs and CLI scripting. It allows you to integrate specialized application appliances such as security and VoIP monitoring devices into your network via XML, as well automatically configuring edge ports for security and VoIP using its Universal Port event-based activation of scripts.

ExtremeXOS high availability architecture and Ethernet Automatic Protection Switching (EAPS) protocol helps reduce network downtime for business continuity and access to mission-critical applications such as CRM, data warehouses and VoIP for carrier and voice grade networks. Its extensibility functionality integrates best-of-breed security and VoIP monitoring appliances to your network with an open, yet secure XML-based Application Programming Interface (API), providing insight and control. Via its dynamic application loading capability, it is capable of integrating Extreme Networks and third party-developed software applications such as the Avaya Converged Network Analyzer VoIP monitoring agent. Its scripting capability helps facilitate automating regular management tasks and applying these to multiple switches.

## Management Tools



**EPICenter**

EPICenter® is a full-featured management tool that simplifies configuration, troubleshooting and status monitoring of networks built with Extreme Networks solutions. Offering a comprehensive set of network management applications for the network and its elements, EPICenter delivers the essential requirements of network management while adding valuable and intuitive features that help save time by streamlining common tasks.

The EPICenter management platform is capable of establishing and maintaining networks that are undergoing rapid change due to convergence. EPICenter sets a new benchmark for accommodating convergence applications by providing intuitive user interfaces and by reducing the complexity of managing converged networking environments. Offering an open architecture, EPICenter can accommodate a multi-vendor, service-rich environment that enables voice-class availability and the enforcement of robust security policies.

# Port Extenders



## ReachNXT 100-8t

ReachNXT™ 100-8t extends the revolutionary ExtremeXOS core-class operating system from Extreme Networks to the network access. ReachNXT 100-8t provides users with a consistent ExtremeXOS experience at an affordable price. It is best suited for network access applications where easy network deployment is required.

# Optics



Extreme Networks Optics are thoroughly tested and are subject to an extensive qualification process before being considered certified to work in Extreme Networks I/O modules and switches. Only proven, qualified vendors are chosen to assist Extreme Networks in providing an end-to-end optical solution.

There are four form factors available: XENPAK, XFP, SFP, and SFP+. Within these form factors there are a variety of choices depending on the customer application and distance capability required.

# Support

## ExtremeWorks Maintenance and Support

Extreme Networks offers comprehensive service solutions that help you optimize your network. ExtremeWorks® maintenance programs give you the support you need to operate and manage your network on a day-to-day basis, and provide you the safety net you need when the unexpected occurs.

# Extensibility

**Deploy**—Widgets that help you quickly deploy your network devices

**Monitor**—Widgets that monitor the health of your network

**Operate**—Widgets that help you handle ongoing network events automatically

**Optimize**—Widgets that help you tune the performance of your network

## XML SDK

ExtremeXOS InSite is a software development kit (SDK) that extends the capabilities of ExtremeXOS through a set of comprehensive Application Programming Interfaces (APIs). These interfaces augment the networking power of ExtremeXOS by allowing applications the ability to interface directly with Extreme Networks switches.

The APIs enable reliable and secure external device-to-device management communication. They provide a mechanism to communicate with ExtremeXOS switches using XML messages. The standards-based SOAP/XML architecture of ExtremeXOS InSite makes it easy to integrate the network infrastructure with high-level application and business software. The configuration and monitoring capabilities provided by the APIs let you create Service Oriented Architecture (SOA) solutions that bridge the gap between application and business logic with network configuration and events.

# Widgets



Extreme Networks Widgets are designed to ease deployment, monitoring, operations and optimization across the spectrum of Extreme Networks switches, access points and security appliances. What is a widget? Simply put, a widget is a published script, rule set or other aid that helps you address your network challenges.

Visit our developer forum where you can download free widgets, get information about widgets and related product documentation—as well as contribute new widgets—or ideas to develop new widgets.

[www.ethernation.net](http://www.ethernation.net)

**extremenetworks.com**



**Corporate and North America**

Extreme Networks  
3585 Monroe Street  
Santa Clara, CA 95051  
United States  
Phone +1 408 579 2800

**Asia Pacific**

Extreme Networks  
541 Orchard Road  
#15-03 Liat Towers  
Singapore 238881  
Phone +65 6836 5437

**Europe, Middle East, Africa  
and South America**

Extreme Networks  
Kernkade 2, 2nd floor  
Lage Weide, Utrecht 3542 CH  
The Netherlands  
Phone +31 30 800 5100

**Japan**

Extreme Networks  
15F Sumitomo Korakuen Building  
1-4-1 Koishikawa  
Bunkyo-ku, Tokyo 112-002  
Japan  
Phone +81 3 5842 4011

email: [info@extremenetworks.com](mailto:info@extremenetworks.com)

