

2N® Smart Gate Baby call

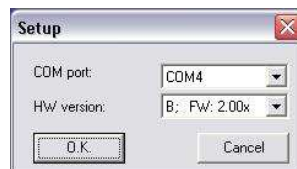
At first it is necessary to connect to Smart Gate device by Smart Gate PC Manager.

Follow these steps:

- At first launch Smart Gate PC Manager
- Click to the wheel icon



- Choose the correct port (you can verify it in Windows – device manager) and click to OK.



- Then click to keyboard icon



- Then click to Tel. line



- Then click to icon Tel. line and to the red label fill the telephone number to which will be automatically called after the telephone is picked up. Baby Call timeout means the time how long Smart Gate wait for pressing any digits. If you do no vote any number in that time, Smart Gate will call to the number which is written in the Baby Call number.

 The image shows the 'FXS and FXO interface' configuration window. It has a standard Windows-style title bar and a close button. The window is divided into several sections:

- FXS line | FXO line**: A tabbed interface with 'FXO line' selected.
- Dialing parameters**: Includes 'Type of dialing' (DTMF), 'Timeout for dialing end recognize [s]' (5), 'Minimal On-Hook [ms]' (500), and a checked 'Beep after dialing end'.
- Signaling**: Includes 'Line reversal indication for call in progress' (unchecked), 'Tariff pulse when call starts/ends' (None), and 'Tariff pulse frequency' (16 kHz).
- FAX parameters**: Includes 'FAX report' (OFF).
- Tone settings**: Includes 'Dial tone', 'Busy tone', and 'Ringback tone' tabs. The 'Dial tone' tab is active, showing 'Double frequency tone' (unchecked), 'Frequency 1 [Hz]' (425), 'Frequency 2 [Hz]' (425), and 'Cadence' (Continuous).
- Volumes**: Includes 'Transmit' and 'Receive' sliders.
- Ringling signal settings**: Includes 'Ringling signal frequency' (50Hz), 'Ringling signal cadence' (1000/4000 ms), 'dtto. for DATA/FAX' (1000/4000 ms), 'CLI transmitting' (Disable), and 'Replace character '+' in CLI by:'.
- 'BabyCall' - automatic call**: This section is highlighted with a red box. It contains 'BabyCall number' (empty text field) and 'BabyCall timeout [s]' (0).
- Tone after disconnection**: Set to 'Busy tone'.

 At the bottom of the window are 'OK' and 'Cancel' buttons.