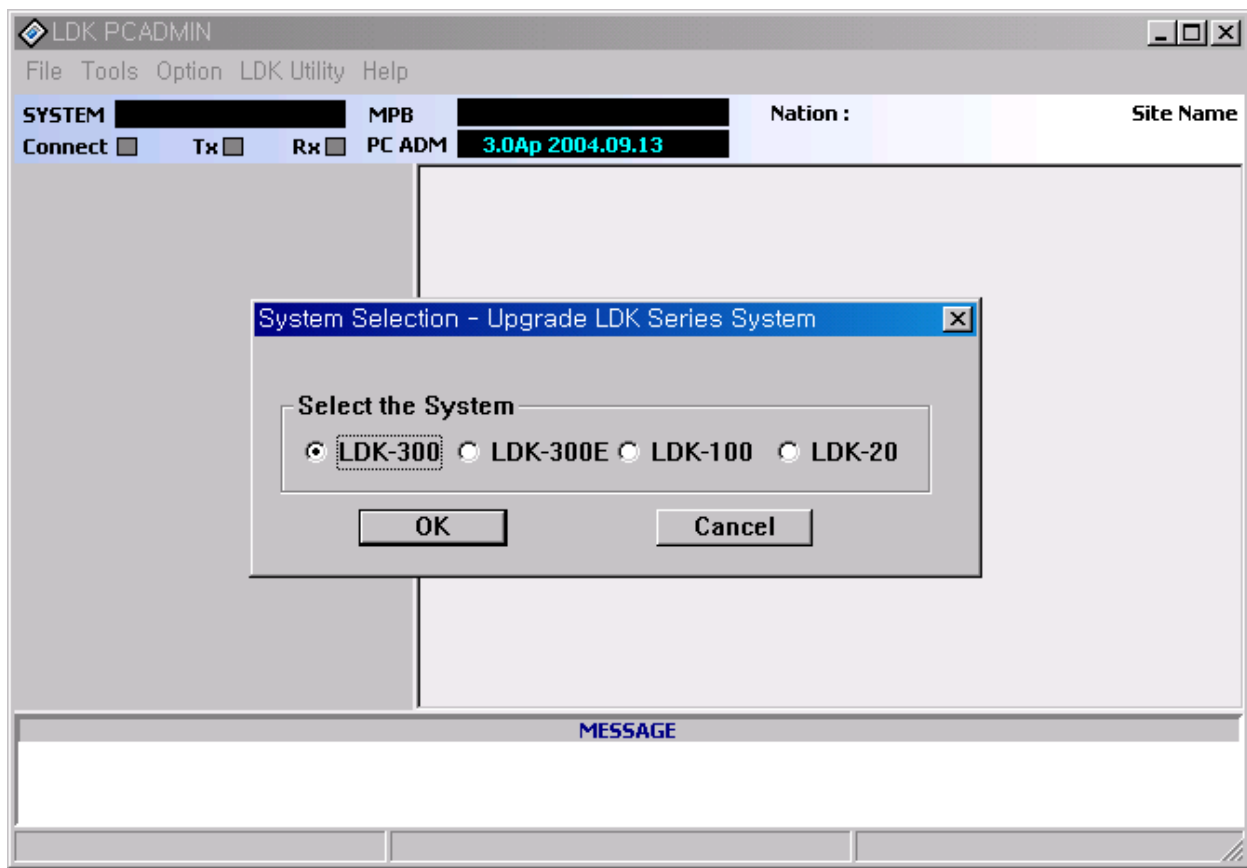


LDK SW Upgrade

Installation And User Guide





REVISION HISTORY

DATE	ISSUE	S/W VER.	CONTENTS
2000/11/10	1.0	A.0Aa	Initial Release
2001/2/6	1.0a	A.0Ae (1.0Ae)	Insert the recommended modem speed
2001/2/25	1.0b	1.0Af	Insert the wait dialog and fail dialog after finishing the s/w transferring Insert the available modem speeds
2002/2/5	1.0c	A.0Ca	Designed for both LDK-300 and LDK-100
2002/3/29	1.0c	X.0Ca	Designed for both LDK-300 and LDK-100
2004/09/22	3.0	3.0An	V3 Feature is added. The information of LDK-20 System is added

Contents –

1. Introduction	4
2. PC Requirement	4
3. Connection method with LDK	4
4. LDK MPB S/W version Compatibility	5
5. Installation	5
6. File Component in your Execution Directory	5
7. Choosing Connection Type	5
8. User Information Dialog	6
9. Starting S/W upgrade	11
10. Transferring Process	12
11. Finishing S/W Upgrade	12

1. Introduction

LDK S/W Upgrade is a PC based Window S/W to update LDK MBU S/W by the transferred ROM file instead of replacing the whole ROM. Four connection types are available (ISDN, TCP, Serial or MODEM connection). It is up to the user which connection method he selects. These 4 types slightly differ by configuration, transfer speed and transferring protocol.

2. PC Requirement

- **PC OS** : Windows 95/98/NT/2000
- **PC Memory** : 8Mbytes or higher (16 Mbytes recommended)
- **PC Free Disk Space** : 5Mbytes or higher (larger than 10 M Bytes recommended)
- **PC Monitor Resolution** : VGA or higher
- **PC Modem** : General analog dial-up modem (only for upgrading through an analog phone line)
- **PC ISDN Modem** : General ISDN modem (only for upgrading through an ISDN phone line)

3. Connection method with LDK

LDK S/W Upgrade is available by the following connection method;

- **Serial connection**

LDK MBU S/W can be updated through RS-232C interface in PC.

- **ISDN line connection**

LDK SW Upgrade

LDK MBU S/W can be updated through ISDN BRI Line interface at the remote PC. Location can be any assigned number in LDK BRI, PRI or STIB T-interface.

- **TCP connection**

LDK MBU S/W can be updated through LAN interface at the remote PC.

- **MODEM connection**

LDK MBU S/W can be updated through MODEM interface at the remote PC.

4. LDK MPB S/W version Compatibility

The available LDK MPB S/W version is 1.0Ap or later.

Note >

|

5. Installation

UpgradeLDK300 is distributed with PC Admin for LDK.

- Refer to the installation of PC Admin for LDK.

Note : In setup procedure, If your PC is Windows 95 generic or some system DLL Files should be update , setup program request restart your PC

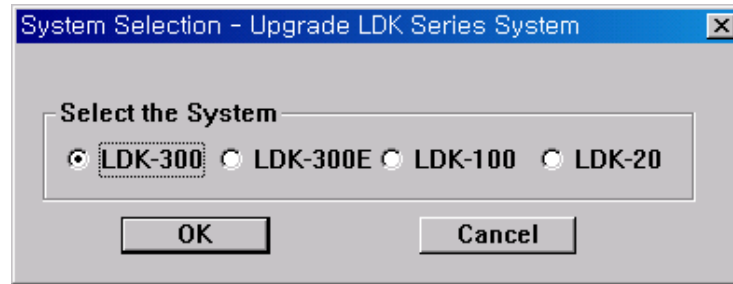
6. File Component in your Execution Directory

If you install GDK Admin successfully, the following files reside in execution directory

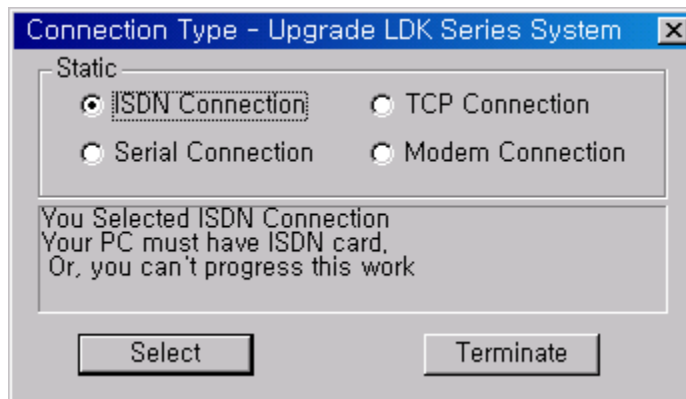
- **UpLDK300.Exe** : Main Execution File
- **Capi2032.dll** : DLL File for ISDN operations

7. Choosing Connection Type

You have to select which system you are connecting to.



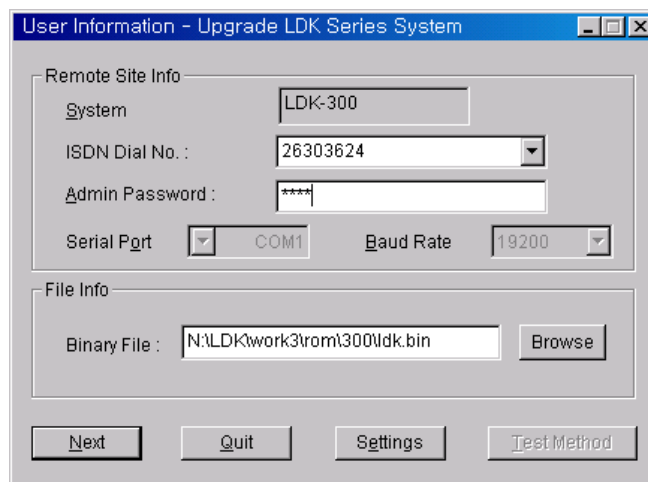
LDK Upgrade is available through ISDN, TCP, Modem and Serial connection. Please choose the desired connection type. User will see a short dialog showing the requirements for the selected connection type. Please check this basic requirements before getting started.



8. User Information Dialog

After selecting the desired connection type user has to decide several configuration requirements including Admin Password, Binary File etc. in the "User Information Dialog". It slightly differs according to the selected connection type.

Upgrade by ISDN Connection



The dialog box titled "User Information - Upgrade LDK Series System" contains two main sections: "Remote Site Info" and "File Info".

Remote Site Info:

- System: LDK-300
- ISDN Dial No.: 26303624
- Admin Password: ****
- Serial Port: COM1
- Baud Rate: 19200

File Info:

- Binary File: N:\LDK\work3\rom\300\ldk.bin
- Buttons: Next, Quit, Settings, Test Method

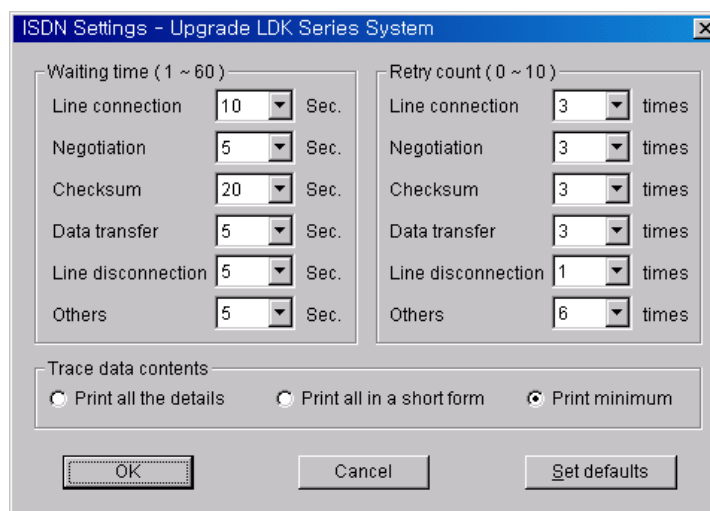
Please enter the following entries for ISDN connection.

ISDN Dial No.: ISDN Telephone number of a T-interface in STIB, BRIB or PRIB in LDK system .

Admin Password: If LDK requires password to update MBU S/W.

Binary File: The new S/W file data to be updated.

User can also can set the details for ISDN connections.



The dialog box titled "ISDN Settings - Upgrade LDK Series System" is divided into two columns of settings and a trace data section.

Waiting time (1 ~ 60):

- Line connection: 10 Sec.
- Negotiation: 5 Sec.
- Checksum: 20 Sec.
- Data transfer: 5 Sec.
- Line disconnection: 5 Sec.
- Others: 5 Sec.

Retry count (0 ~ 10):

- Line connection: 3 times
- Negotiation: 3 times
- Checksum: 3 times
- Data transfer: 3 times
- Line disconnection: 1 times
- Others: 6 times

Trace data contents:

- Print all the details
- Print all in a short form
- Print minimum

Buttons: OK, Cancel, Set defaults

“Settings” dialog box contains three parts, which are waiting time, retry count and the volume of trace data.

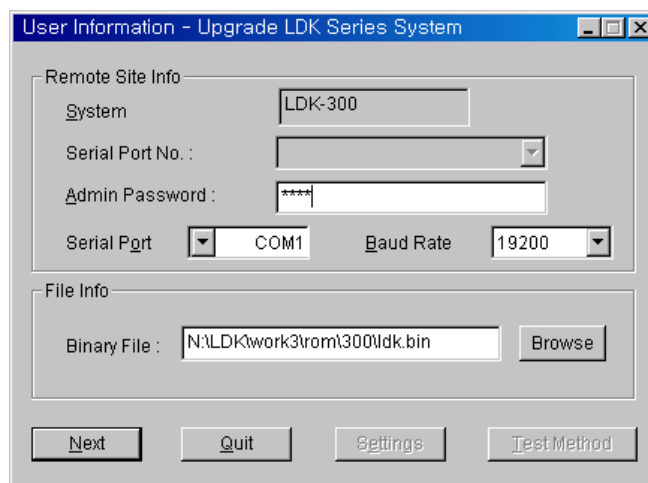
You can change the default values of settings, but it is strongly recommended that the default settings should not be changed. The change of default values can severely affect the normal operation of software upgrade so that the upgrade time can be doubled or the upgrade can be abnormally aborted.

You can discard all the changes you made by selecting **Set defaults** button.

LDK SW Upgrade

Press Next button to go to the next step.

Upgrade by Serial Connection



Please enter the following entries for Serial connection.

Serial Port: Serial port No. in PC, which is connected to LDK COM port 2. **(Unable to use LDK COM port 1)**

Admin Password: If LDK requires password to update MBU S/W.

Binary File: The new S/W file data to be updated.

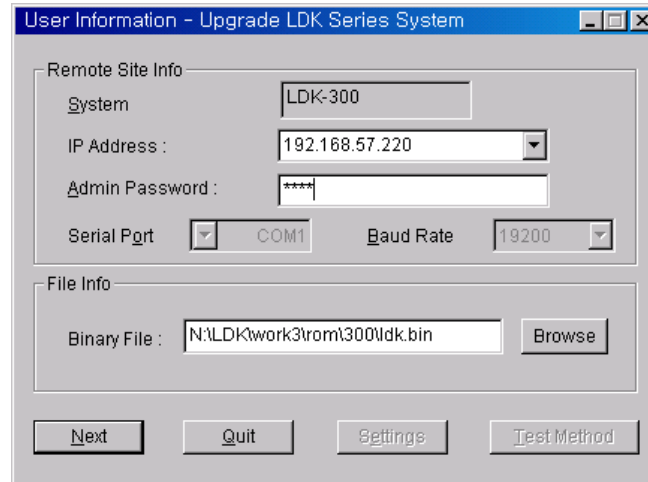
Baud Rate: Choose the transferring baud rate. 19200, 38400, or 57600 bps are recommended. (*Note*)

Note: The transferring baud rate in PC and the baud rate of COM port 2 in LDK system must be identical. You can program LDK system baud rate by PGM174.(For more information please refer to LDK Functional Specification.)

Note: If you set PC's and LDK system's transferring baud rate as 57600 bps, it might happen that some keysets display incorrect characters in their LCD, or that LDK system be unstable. But, the rate will be the faster way of upgrading.

Press Next button to go to the next step.

Upgrade by TCP Connection



Please enter the following entries for TCP connection.

IP Address: IP address of the destination LDK system .(*Note*)

Admin Password: If LDK requires password to update MBU S/W.

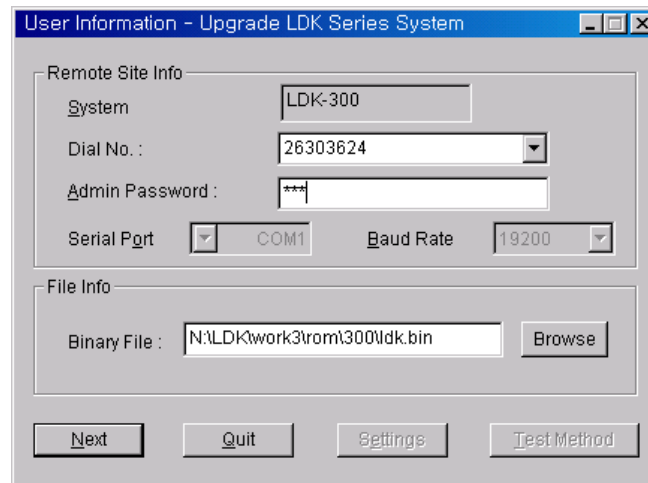
Binary File: The new S/W file data to be updated.

Note: Assign LDK system IP address before you attempt to TCP connection. You can program LDK system IP address by PGM108.(For more information please refer to LDK Functional Specification.)

Note: It might happen that the TCP connection will be disconnected due to the overloaded network.

Press Next button to go to the next step.

Upgrade by MODEM Connection



If user selects MODEM configuration the next step is to set the
Please enter the following entries.

Dial No.: Analog telephone number of the destination LDK system. (*Note*)

Admin Password: If LDK requires password to update MBU S/W.

Binary File: The new S/W file data to be updated.

Note: Assign The Analog telephone number of LDK system to Modem associated device before you attempt to MODEM connection. You can program set the analog line to modem associated device by PGM170. (For more information please refer to LDK Functional Specification.)

Note: The transferring baud rate in PC and the baud rate of Modem port (COM Port 3) in LDK system must be identical. You can program LDK system baud rate by PGM174. (For more information please refer to LDK Functional Specification.) Using 9600 bps is recommended. (2400bps is available but slow. And, 19200bps is also available but a little unstable.)

Note: It might happen that the MODEM connection will be lost due to the PSTN network situation.

Press Next button to go to the next step.

9. Starting S/W upgrade

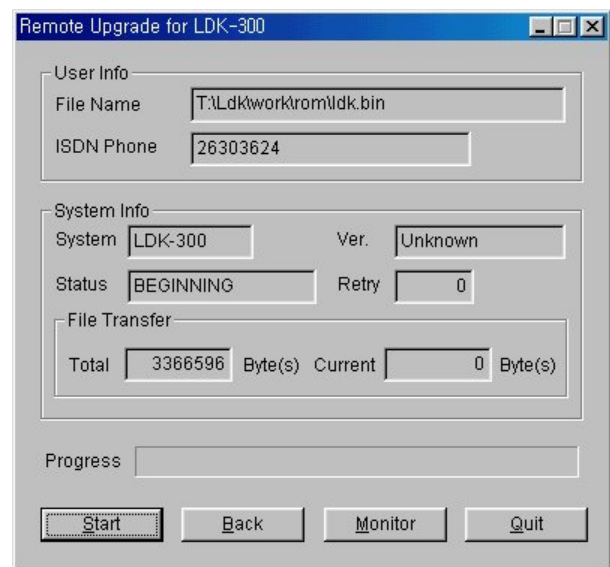
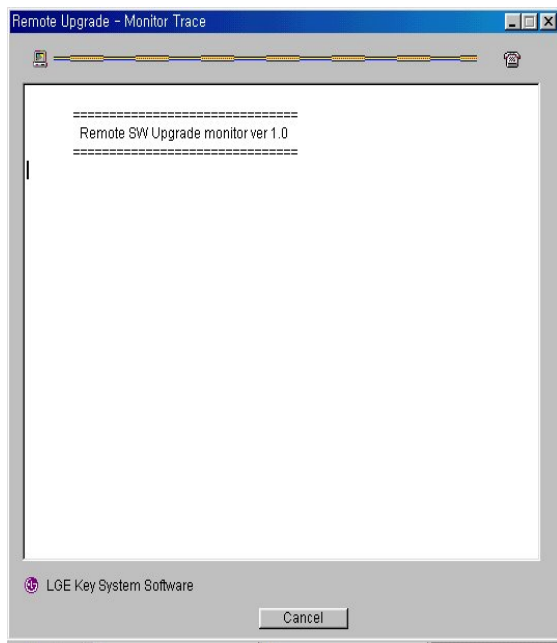
After setting the detailed configuration for the selected connection type, now user is ready to start LDK S/W upgrade. User has the following choice.

Start: S/W transfer process will start .

Back: Go to the previous step.

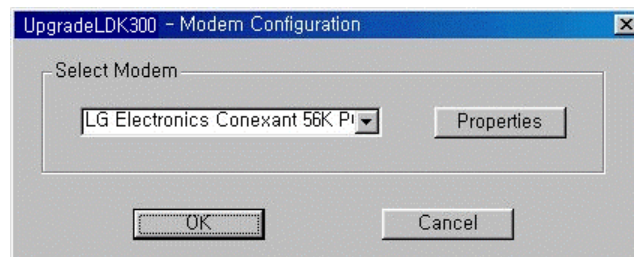
Monitor: Monitor Trace window.

Quit: LDK S/W upgrade program will be terminated.



If user presses *Start* button at this time all other button except Monitor button will be deactivated. In Remote upgrade in “*Monitor Trace*” window the undergoing progress will be displayed. (*Note*)

Note: In MODEM connection after pressing *Start* button user has to select the details for the MODEM interface in the PC. The below dialog will be displayed. Press OK to getting started.



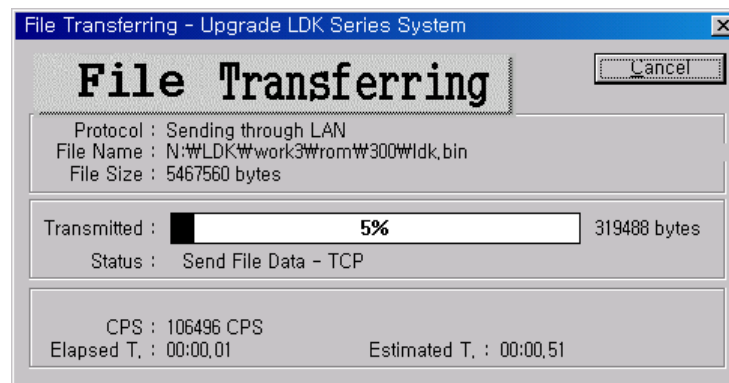
10. Transferring Process.

When S/W file transfer is undergoing user can monitor the process.

In ISDN connection user can show the transferring process in the Monitor Dialog window.

And hence Serial, Modem and TCP connection is using Z-Modem transfer protocol the sending process will be displayed in Z-Modem window.

Note> In version3, TCP connection isn't using Z-Modem transfer. So, you can upgrade the SW quickly.



11. Finishing S/W Upgrade.

If the transferring process is finished successfully, "Wait Dialog" will be displayed. That means that LDK system has just started software upgrading internally. Every keysets stop operating. **User must not reset the LDK system until it will be automatically reset and run again. This will take a few minutes.** (You can check whether the upgrading is in proceeding or not in LDK system's MPB lamp flashing)



LDK SW Upgrade

After S/W transferring process is failed “Fail Dialog” will be displayed. Check the reason of failure in the monitor dialog or trace file that was automatically generated in the PC directory where the upgrading software is. User can start another upgrade by selecting Yes button of “Again Dialog”.

